

Great Ponton Primary School



An Information PowerPoint for Perspective
Reception Parents

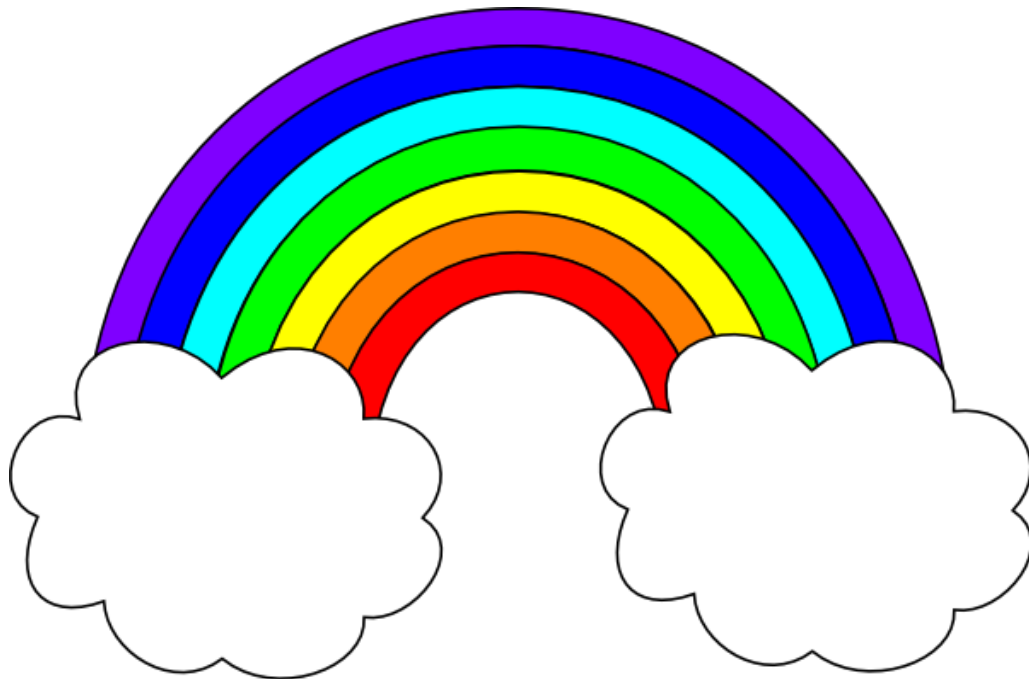
Who are we?

At Great Ponton, we are a small, rural school with small class sizes. We believe this gives our school a real family feel where all of our staff are able to know and build relationships with all of the children, regardless of year group. This greater staff to pupil ratio also allows for greater support when needed.

Our family oriented ethos also allows us to build a strong school community where families can be involved in their child's school life. We also believe this helps us to build strong lines of communication between home and school.

We hope this presentation provides useful information about us, our school and what we do.

What to expect in Reception



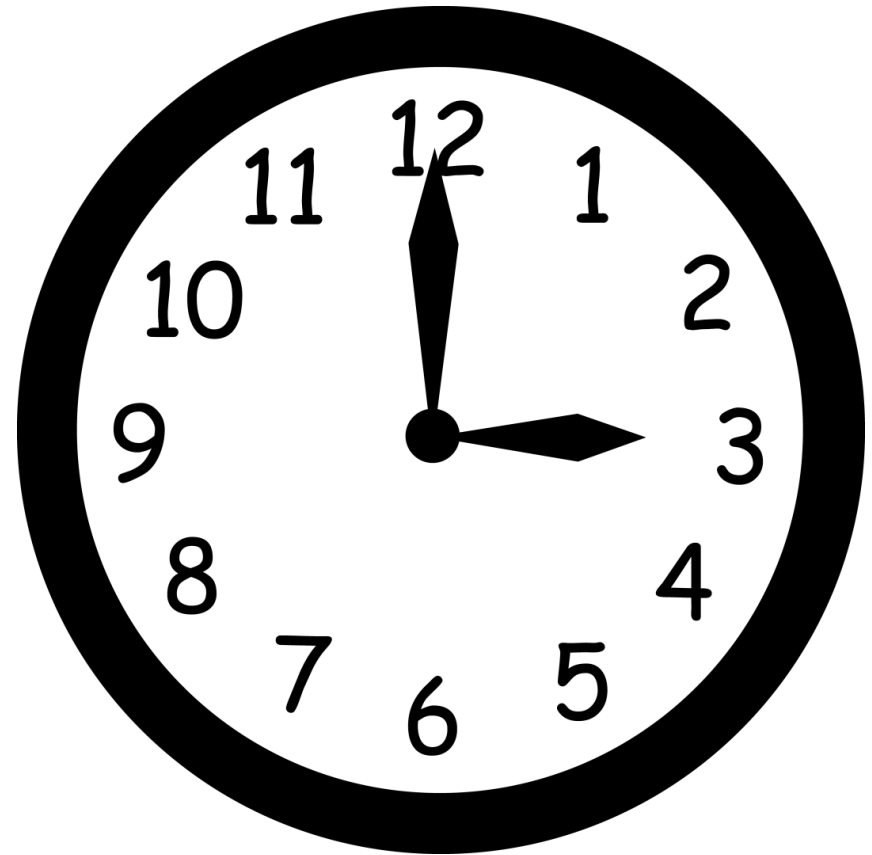
Miss Weatherstone

I am the Reception/Year 1 Class Teacher at Great Ponton Primary. I started at Great Ponton in November of 2020 and I have absolutely loved my time here so far. I am so excited to be working in Reception/Year 1 this year and support the children through such an important time. My job is to ensure the children in my class are happy, safe, grow in confidence and develop the key skills needed for the next stage in their education.



How our day works:

- Register
- Collective Worship
- Phonics
- Literacy
- Break Time
- Maths
- Lunch Time
- Afternoon Session 1
- Afternoon Session 2
- Storytime
- Home time



How our day works:

- Collective worship is held in the school hall, as a whole school, we have visitors in school weekly to deliver some of our assemblies.
- In phonics we follow the 'Read, Write, Inc' scheme of work. Initially, the children will learn single sounds in the Reception Class. They are then grouped into abilities across the class for these sessions.
- We follow a creative curriculum which is a topic based approach to our learning.



Our Curriculum

We have a new topic/theme each half term in which our learning is based around.

This year our topics are:

Autumn 1 - Journeys

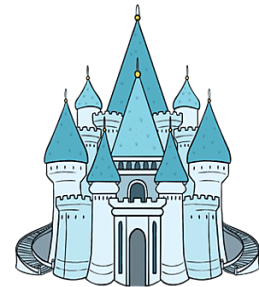
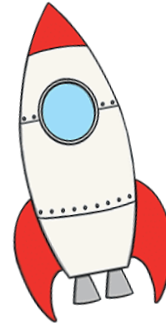
Autumn 2 - Our World

Spring 1 - Similarities and Differences

Spring 2 - Changes Around Us

Summer 1 - Once Upon a Time

Summer 2 - Structures and Materials



Our Provision

Continuous provision describes all of the different provision areas which are available for your children to use every day. Carefully planned continuous provision will enable children to learn skills, challenge their thinking and help them to embed concepts. The following slides will show the different areas of our classroom and what we provide in each one.



Reading Corner

This is the reading area in our classroom. Children can choose a book and get comfy in our reading tent. Our reading tree shows different books that we have read in class and some of the children's thoughts about each book. Our book shelves contain classic children's tales as well as modern and diverse stories. We regularly enhance our reading area with books relating to topics covered in class.



Small World

The intention of small world play is for children to use their imagination to act out ideas, both made up or real life experiences, and re-enact stories. This provides opportunities for building language, using imagination and learning social skills.

Our small world will follow themes relating to topics covered in class as well as children's current interests.



Creative Area

Our creative area is designed to encourage creativity and self expression. Our activities are set up to help develop fine motor skills and allow children freedom to create their own original designs whilst experimenting with colour, shape and size. We always showcase what children have made to build their confidence and ensure they have a sense of pride in their work.



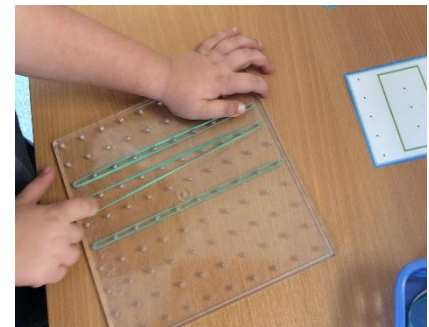


Home Corner

A Home Corner is the most familiar experience the children can have. It relates directly to their own lives and their interests and is something that all children have in common regardless of their cultural background or previous experience. It provides a context for your children to explore their social and emotional lives and a familiar place for developing language and communication. We are continuing to enhance our Home Corner based on children's interests, times of year etc.

Funky Fingers

Our Funky Fingers area is designed all around developing and improving fine motor skills. Fine motor skills are the ability to make movements using the small muscles in our hands and wrists. Developing these skills is vital in early education as they are essential for performing everyday and academic tasks. Activities in this area often relate to other learning areas including Maths, Phonics and Understanding the World.



Maths Area

Our Maths area helps us to introduce key mathematical curriculum concepts in a fun and engaging way. Through hands on learning, the children will also develop early positional language skills through resources, rhymes and songs which lay strong foundations for later learning. In this area, children can apply learnt knowledge to fun and exciting activities.



Outdoor Area

Time spent outside is an integral part of children's learning and development in the early years. We provide a range of exciting and inviting areas for the children to explore. Our Outdoor Provision offers a wide range of opportunities for children to learn, develop their vocabulary, social skills as well as gross and fine motor skills.



Construction Area

Fairy Garden and Planting Area



Outdoor Role Play
(Currently ASDA Supermarket!)





Water Area



Mud Kitchen



Writing and Mark Making Area





Opportunities for
developing Gross
Motor Skills

Our Classroom

We aim to provide a calm, fun and safe learning environment for all of our children. We always prioritise the children's mental health and well-being before anything else. We strive to equally support and challenge all children at their appropriate level. Encouraging the children to express themselves and their individuality as well as making them feel a sense of belonging is also extremely important to us.

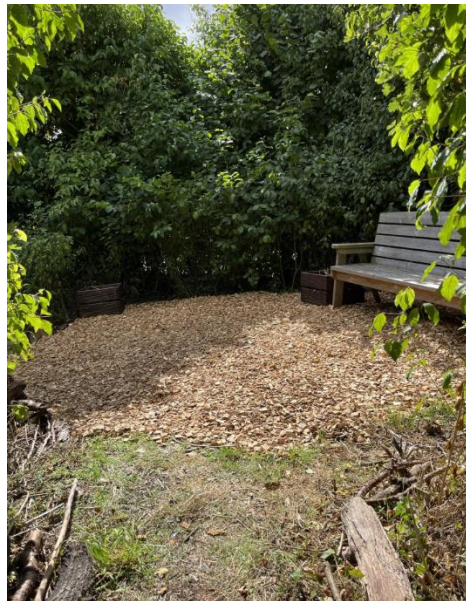




More about our school



Our Wilderness Corner



A new addition to our school this year is our 'Wilderness Corner'. We worked really hard on this area over the summer holidays to get it ready for our children to use.

This area has endless learning opportunities for all year groups. It also makes a lovely area for story times.

Our School Animals

We are very lucky at Great Ponton as we have a school dog (Digger) and 2 Guinea Pigs (Fudge and Honey).

Digger is our lovely therapy dog who is working in our school as part of an on-going provision for wellbeing and mental health. Digger lives with Mr Leader and belongs to Natures Den Education and comes in to school every day to be alongside the children.

The children also have the opportunity to care for the Guinea Pigs daily by feeding, cleaning and interacting with them.



Opportunities for Parental Involvement

At Great Ponton, we see our parents and families as valuable members of our school community and strive to involve you in school life at every opportunity. Below are just a few examples:

- Every Friday we have a '**Celebration Assembly**'. In this special assembly, a child from each class is presented with a certificate from our Headteacher for impressing their teacher in some way that week. Parents of these children are invited into the assembly on a Friday morning.
- We love reading at our school and love for families to get involved too. Last year, we introduced '**Secret Readers**' where every Wednesday, a family member or relative of one of the children would come into class and read to them at home time. The children love seeing who it is going to be each week!

Opportunities for Parental Involvement

Examples of other events we have previously held:

- Jubilee Picnic:** Families were invited to bring a picnic into school and celebrate the Queen's Jubilee. The children put on a performance and shared pieces of their work.
- School Dog Show:** Families were invited to bring in their dogs and enter a variety of classes.
- World Book Day:** Families were invited to come into school and read with their children on the school field.
- Coffee Morning:** Families were invited to bake and buy cakes to enjoy together in school, all while raising money for Macmillan Cancer Support!



Well-Being and Pastoral Support



Well-being is our top priority at Great Ponton Primary School. This is The Ark - our pastoral room. The Ark is a welcoming, cosy and safe space for our children who need support with their emotions, worries or for those who want to come and chat over anything they may have on their mind.

Our ELSA (Emotional Literacy Support Assistant), Mrs Schofield can be found here every afternoon, working either 1:1 with children or with children in small groups.

The Ark is a comfortable, relaxed room with a range of resources to support our children's emotional wellbeing, helping to ensure their time in school is a positive one and that they are able to work to their best ability.



Opportunities offered throughout the School

- Class Productions:** All classes put on a production throughout the year;
EYFS/KS1 - Christmas Nativity
Year 3/4 - Easter Production
Year 5/6 - End of Year/Leavers Production
- Residential Trips:** Our Year 5/6 class have the opportunity to go on 2 residential trips by the end of Year 6. We have a 2 year rotation of visiting both PGL and Kingswood.
- London Trip:** Our Year 6 children get the opportunity to go on a leavers day trip to London.
- After School Clubs:** We offer a variety of after school clubs to all of our children. Examples of our school clubs include; Netball, Art, Music, Book Club, Well-Being Club and Football.
- Gala Dinner:** As part of the leavers celebrations, the Year 6 children put on a Gala Dinner for their families. They spend the day prepping and cooking their meal ready to serve it in the evening!

Opportunities offered throughout the School

-Pupil Voice: We have a wide variety of roles and opportunities for our children to take on responsibilities around the school.

Head boy and girl: Year 6

House Captains: Year 6

Bronze Ambassadors (Inspire+ Sports Ambassadors): Year 6

Digital Leaders: Year 3-Year 6

School Council: Year 1-Year 6

-Swimming: At Great Ponton, all year groups from Reception to Year 6 go swimming with school each year. We believe this is an important skill that children of all ages should have the opportunity to access.

-Inspire+: We are an Inspire+ partner school which allows us to provide a wide variety of sport opportunities for our children. From competitions to skills workshops to sessions with specialist PE teachers.

Visit our website to
find out more about us...

www.greatpontonprimaryschool.co.uk

We are also on Facebook, search:
Great Ponton C of E Primary School

Any Questions?

Please feel free to contact our school if you have any further questions.

We also welcome visits so please get in touch if you would like to come and look around our wonderful school😊

School Contact Number: 01476 530306

Headteacher Email:

keith.leader@greatponton.lincs.sch.uk

